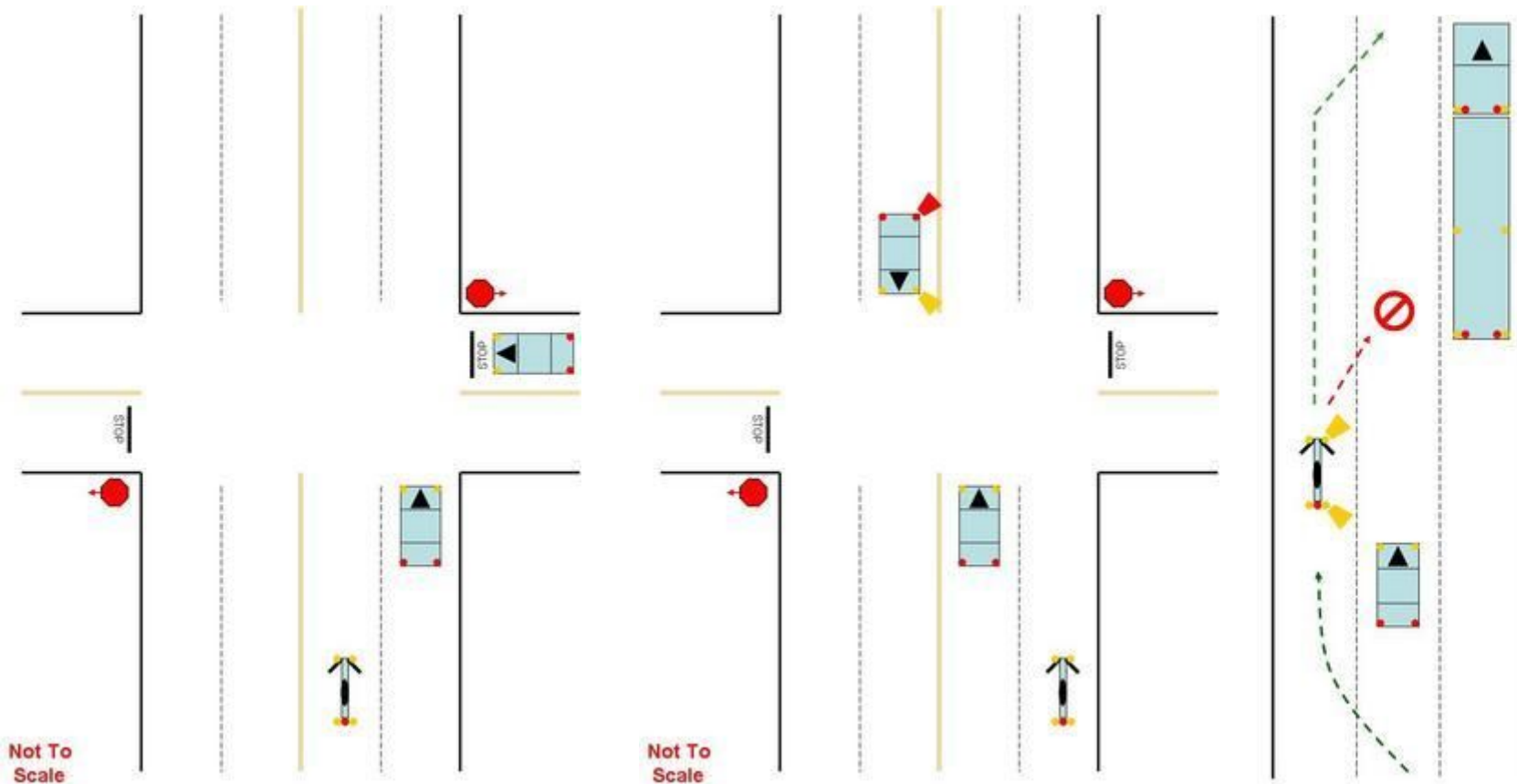


## SAFETY CHALLENGE

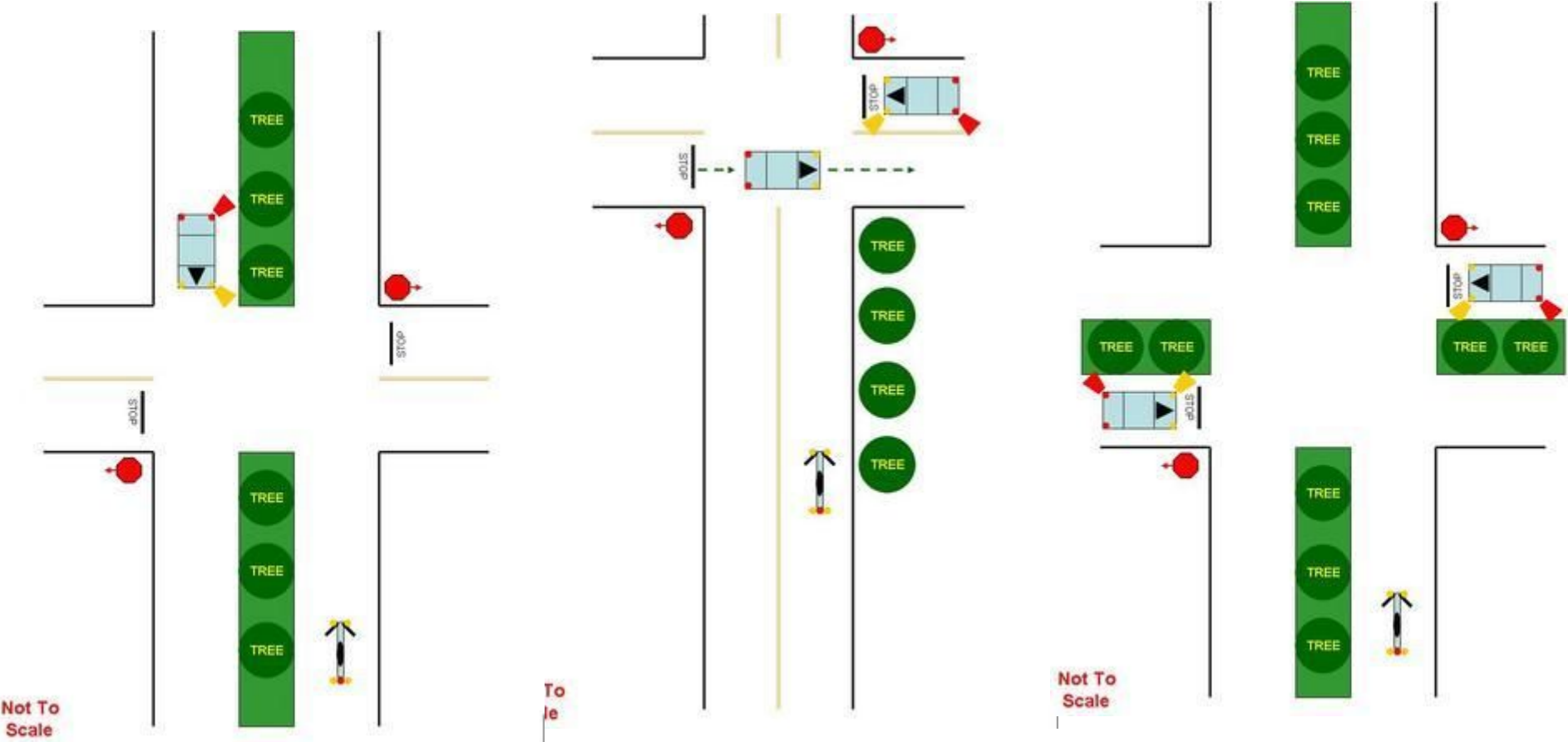
HOG 411, Safety Officer • Al "BEAR" Thomason

In an effort to help visualize pending traffic hazards, here are some diagrams. The idea being to learn to recognize ahead of time how/what may currently be the beginning of a dangerous riding situation. Each diagram presents multiple situations (I'm sure there are many more) which could start to develop into a potential hazard. If the rider knows ahead of time, he/she can take corrective measures to improve the situation.

Have a party and/or dinner guests and challenge each other to see how many hazards everyone can find.

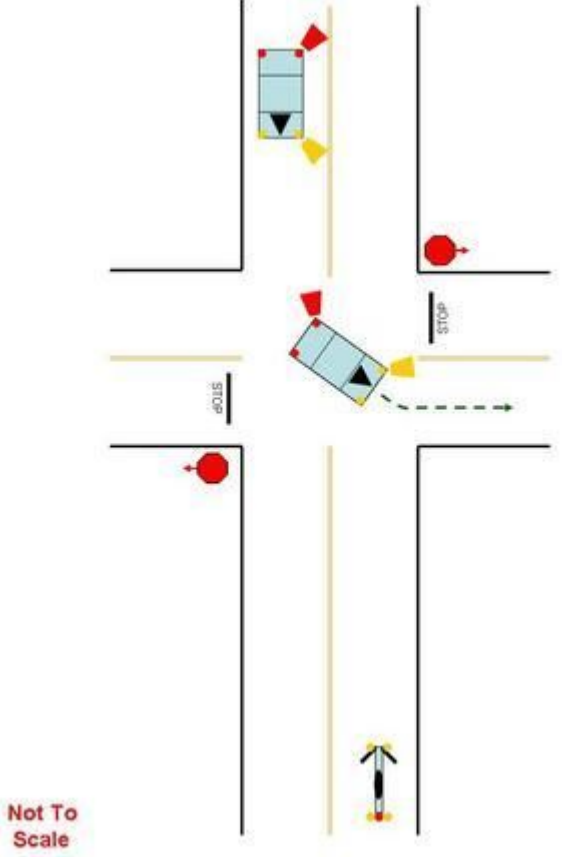
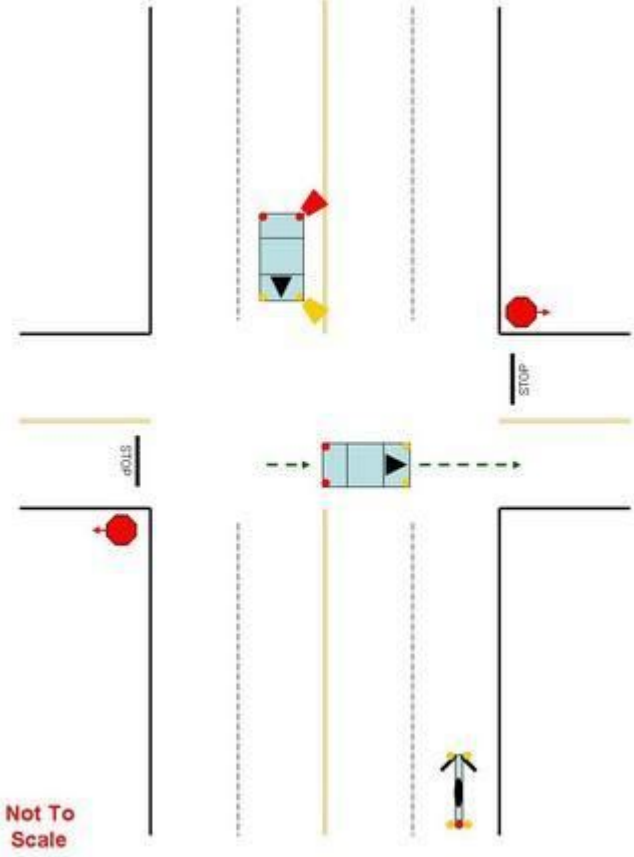
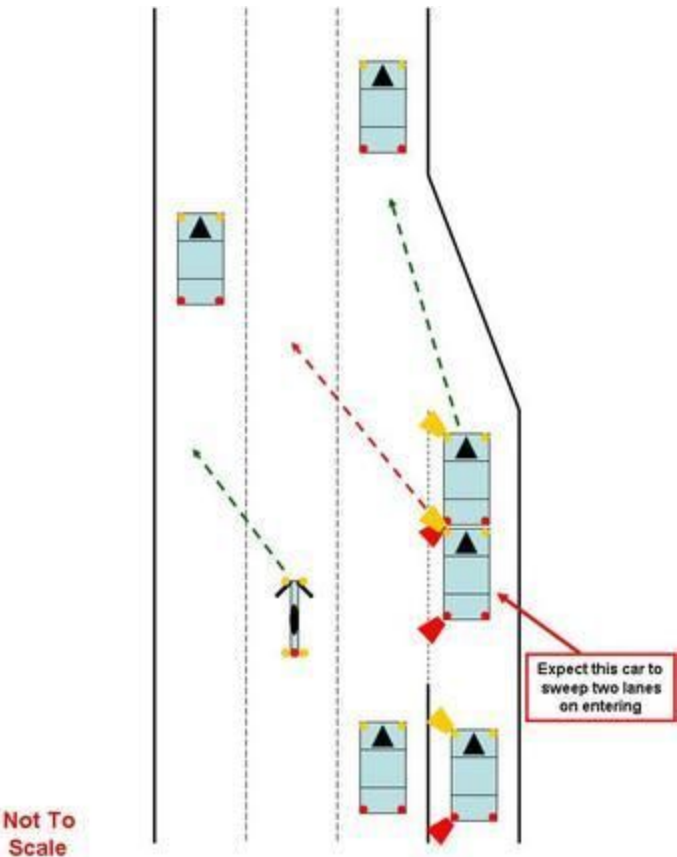


**SAFETY CHALLENGE**  
*HOG 411, Safety Officer • AI "BEAR" Thomason*



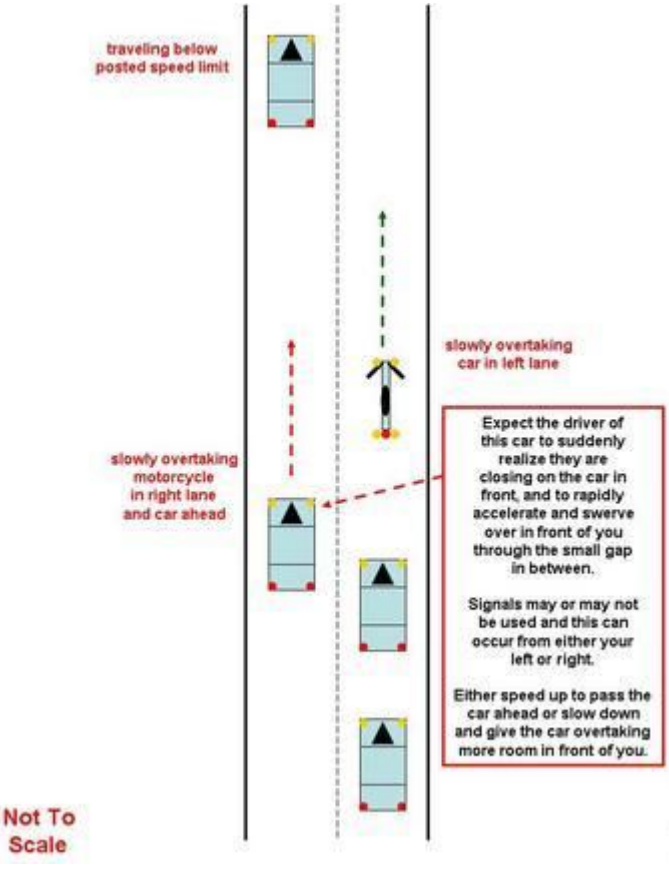
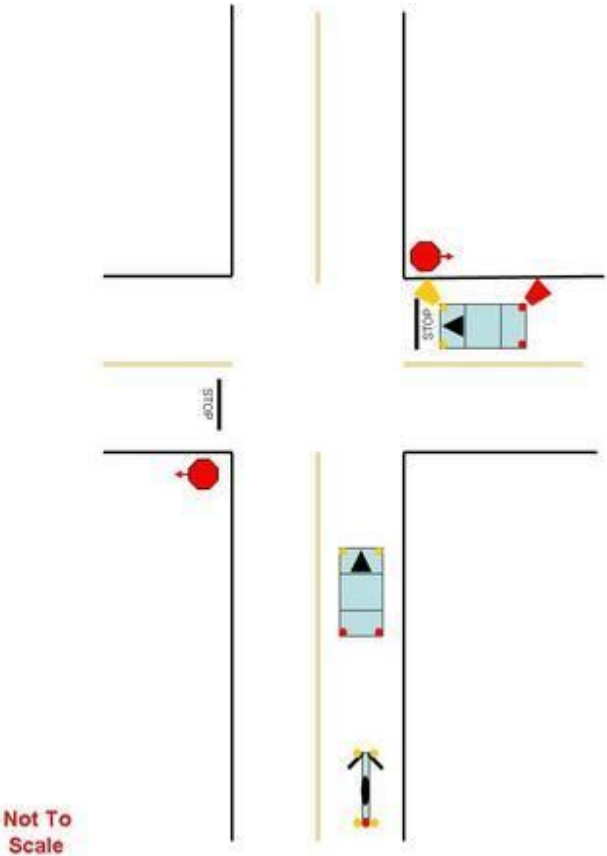
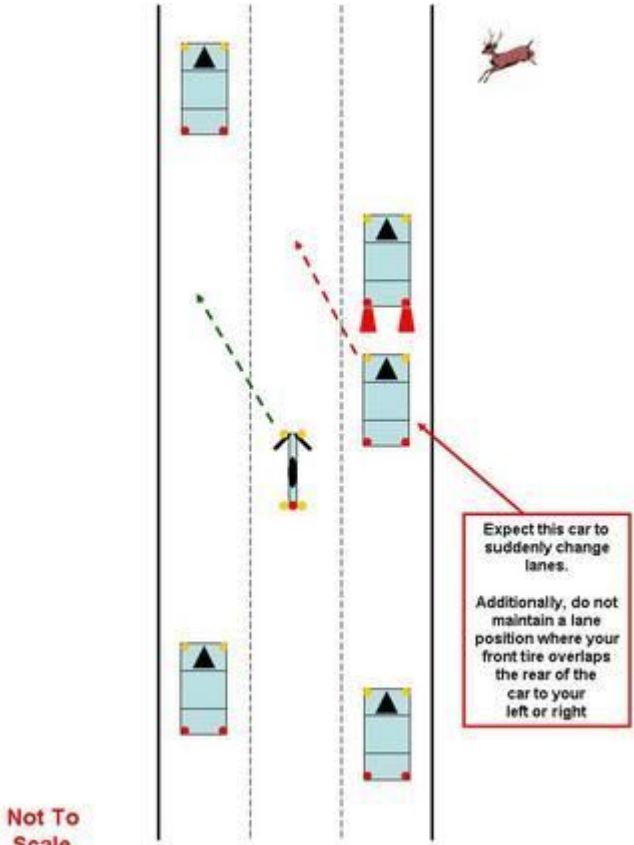
Illustrations taken from D. R., [http://www.msgroup.org/forums/mtt/topic.asp?TOPIC\\_ID=6553](http://www.msgroup.org/forums/mtt/topic.asp?TOPIC_ID=6553)

**SAFETY CHALLENGE**  
*HOG 411, Safety Officer • AI "BEAR" Thomason*



Illustrations taken from D. R., [http://www.msgroup.org/forums/mtt/topic.asp?TOPIC\\_ID=6553](http://www.msgroup.org/forums/mtt/topic.asp?TOPIC_ID=6553)

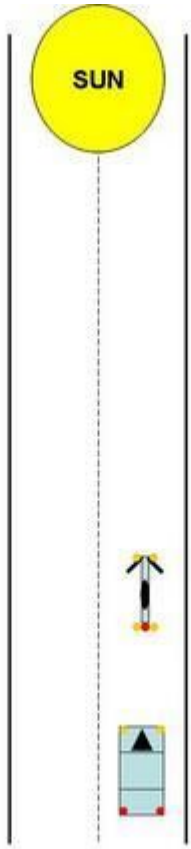
**SAFETY CHALLENGE**  
**HOG 411, Safety Officer • AI "BEAR" Thomason**



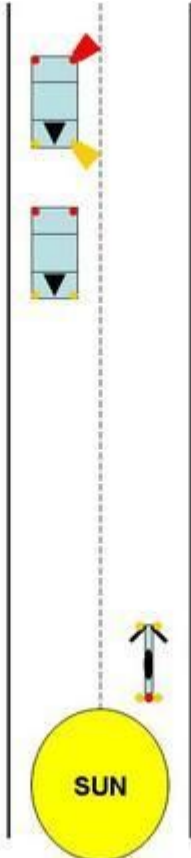
Illustrations taken from D. R., [http://www.msgroup.org/forums/mtt/topic.asp?TOPIC\\_ID=6553](http://www.msgroup.org/forums/mtt/topic.asp?TOPIC_ID=6553)

**SAFETY CHALLENGE**  
*HOG 411, Safety Officer • AI "BEAR" Thomason*

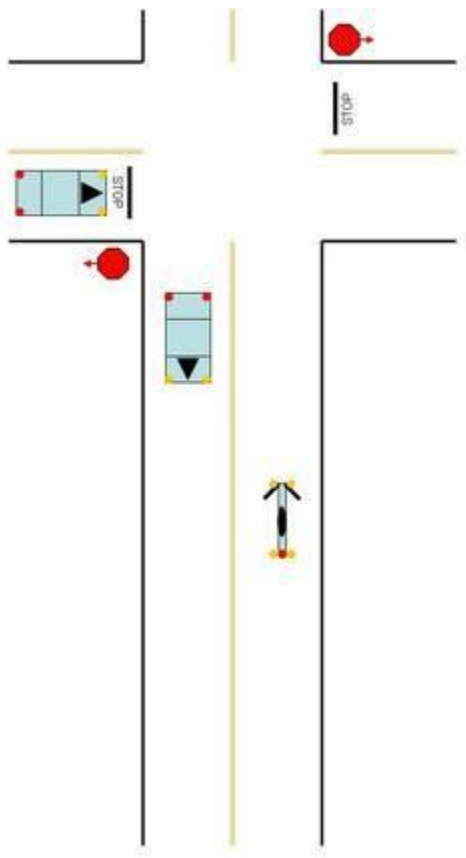
Not To Scale



Not To Scale

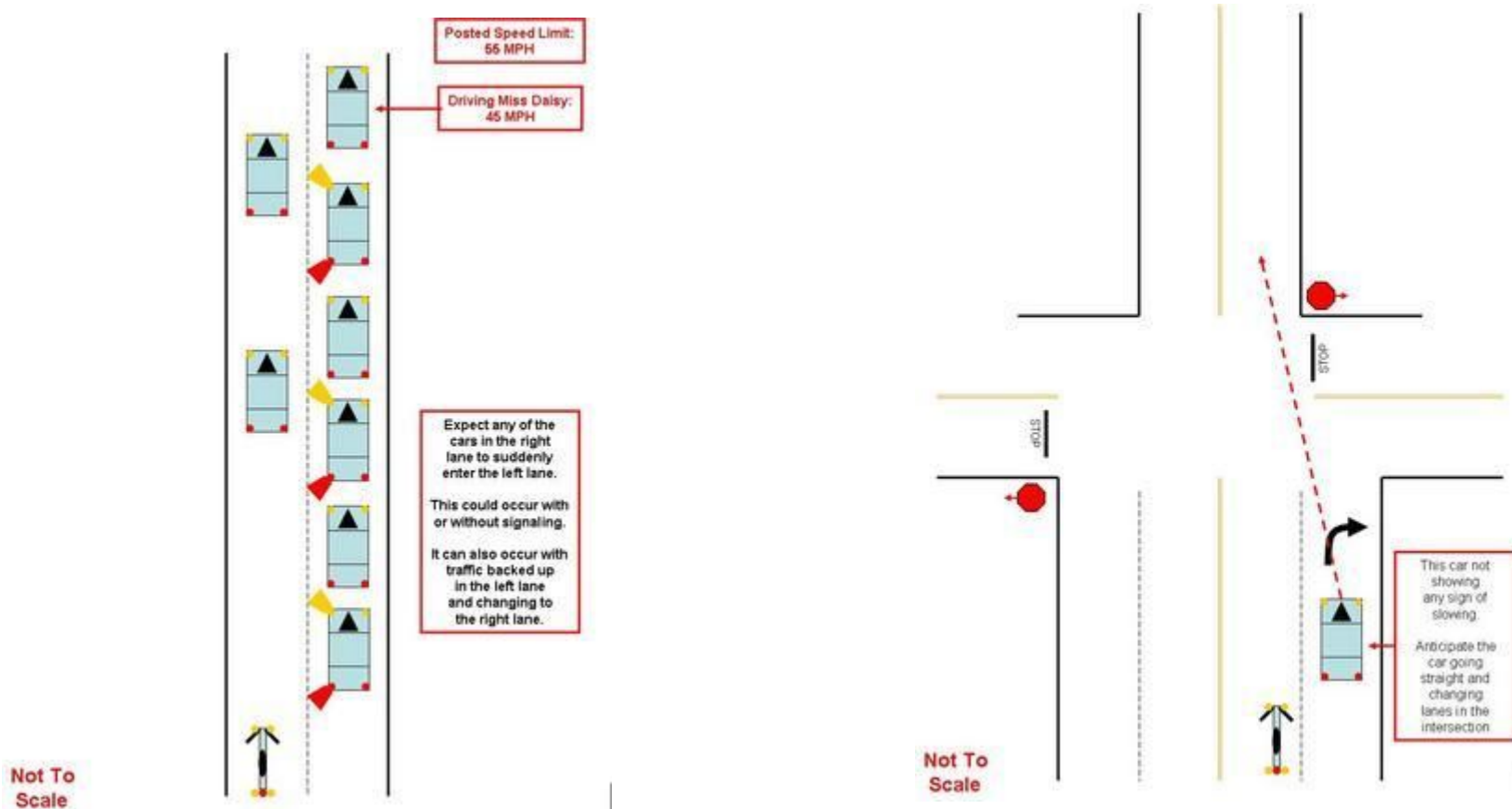


Not To Scale



## SAFETY CHALLENGE

HOG 411, Safety Officer • Al "BEAR" Thomason



**Do all you can to be aware of what is happening around you -- plan and adjust accordingly. (Look, Evaluate, Execute ... or in military terms, Observe, Orient, Decide, Act... repeat as often as necessary)**